

Windows® Drive Letter Assignment for TuffDrive® USB Key Devices

Introduction

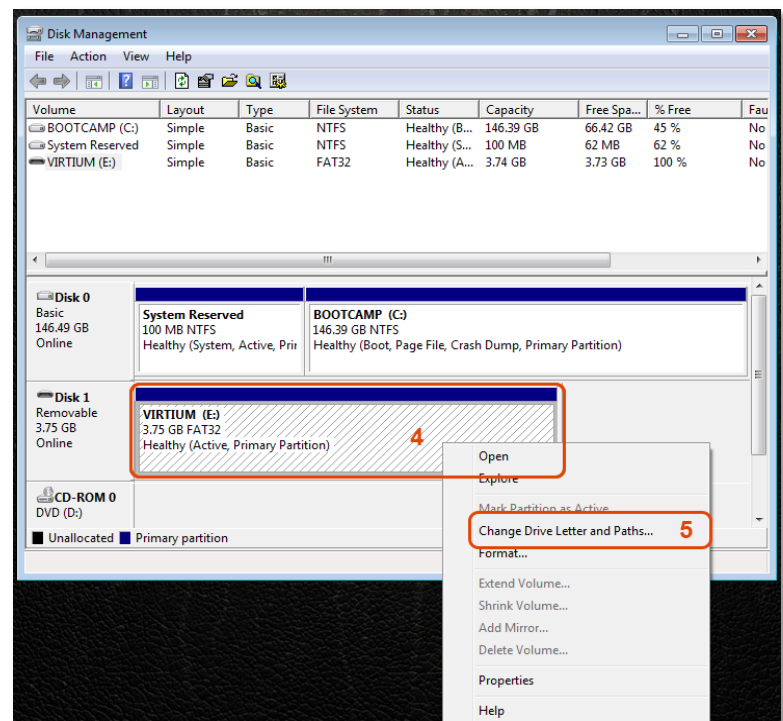
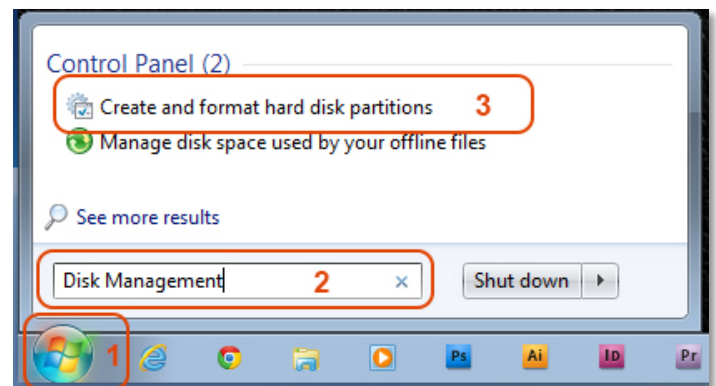
Users of Virtium's TuffDrive Industrial USB devices oftentimes need to change Windows drive letter assignments permanently so they function properly with their applications – even after restarts and power-downs.

Steps

Plug your TuffDrive USB key into your Windows device, view the screenshots and follow these steps:

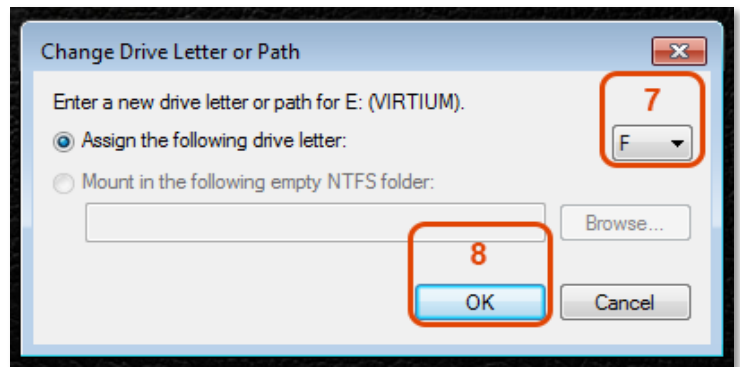
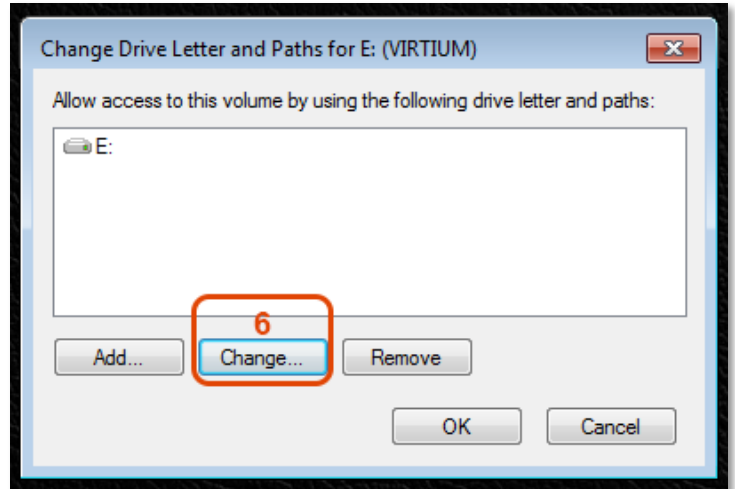
1. Click the Windows “Start” button.
2. Type “Disk Management” into the Search bar.
3. Select “Create and format hard disk partitions”.
4. From the Disk Management screen, right-click on the external Virtium TuffDrive drive.
5. Select “Change Drive Letter and Paths...”.

Go to the next page >



6. Select "Change".
7. Select a new drive letter.
8. Click OK.

The new drive letter will be retained – even if you remove it and reinsert it.



Virtium manufactures memory and storage solutions for the world's top industrial embedded OEMs. For two decades we have designed, built and supported our products in the USA - fortified by a network of global locations. Our world-class technology and unsurpassed support provide a superior customer experience that continuously results in better industrial embedded products for our increasingly interconnected world.

© Copyright 2015. All rights reserved. Virtium®, Storfly® and TuffDrive® are registered trademarks of Virtium Technology Inc. All other non-Virtium product names are trademarks of their respective companies.